

PREFACE

Congratulations! Welcome to a New life created from NewSound *READY TO ENJOY*. It's the first step for you to read this user manual before using *READY TO ENJOY* system(We called RTE in here) hearing instrument.

RTE is a set of hearing sluction contained hearing instrument, program box and programming software. User can do hearing testing and fitting all by himself with RTE system.

Please read this manual carefully to benefit from all the features of your new RTE system. Ask your NewSound Hearing Consultant if you have any questions.

THE MANUFACTURER ALLOWS HIMSELF THE RIGHT TO MODIFY
WITHOUT ANY PRELIMINARY OPINION THE TECHNICAL
SPECIFICATIONS OF THE PRODUCT.

Feature

- Hearing instrument

Each sets of *RTE* system included one/two hearing instruments inside. Four different types instruments for selection.

RIC type: NSG275 D8/D4/D2 RIC

OA type: NSG275 DOA



1.Memory Switch

2.Rear Microphone

3.Front Microphone

4.Sound Tube

5.Dome

6.Soud Outlet

7.Retention Lock

8.Battery door

9.Receiver

10.WaxStop

BTE type: NSG275 D8



1. Earhook
2. Volume Control
3. Memory Switch
6. Battery door

ContactEAR type: NSG183 MCIC



1. Microphone inlet
3. Battery door
4. Removal handle
6. Sound outlet

● NSPRO

NSPRO is a programmer, transmitting data between hearing instrument and software. We called NSPRO here.

The Power LED lighting (green color) when NSPRO connect with computer success.

The Left (blue color) or Right LED (red color) lighting when software is detecting or reading data from Left size or Right size hearing instrument.



- NS63 cable

NS63 cable is use to connecting hearing instrument with NSPRO, and offer data transmit function.

- Fitting software

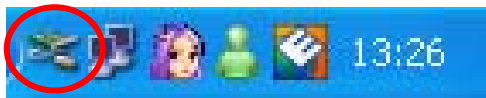
We call MyFit here.

See *MyFit Guide* for detailed introduction.

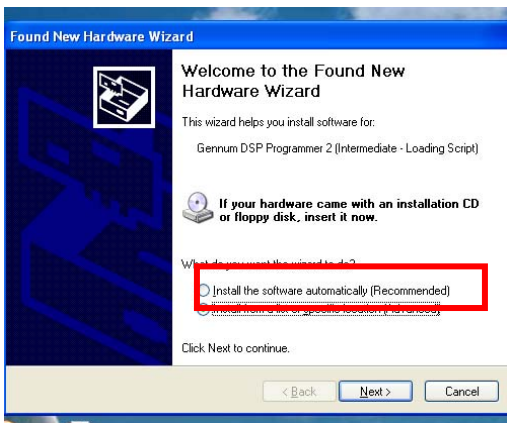
Start running software

1). Insert installation CD in CD-ROM drive.

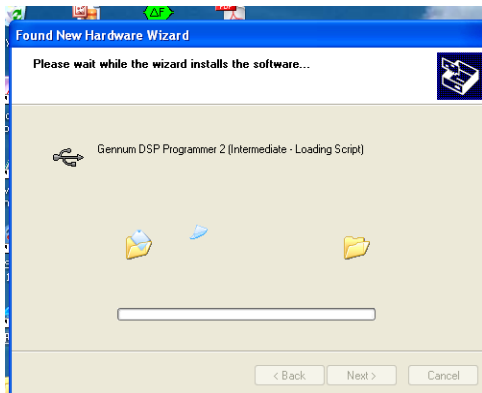
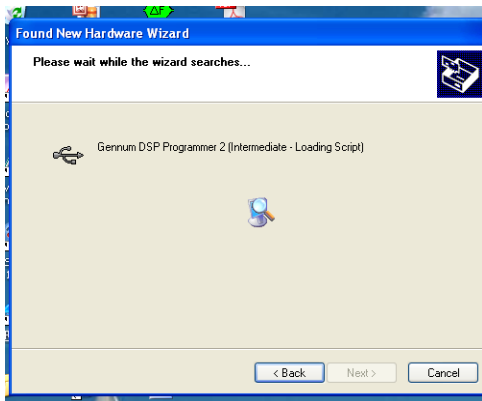
When first time connect NSPRO with your computer, a new icon is shown.



2). System will run “Found New Hardware Wizard” dialog box.
Select “Install the software automatically”,

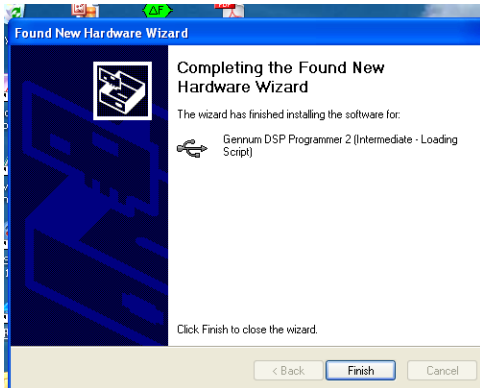


3) System will running the Wizard automatically.



4) After finish Wizard, system will show:

Finished installing the software for: Gennum DSP Programmer 2

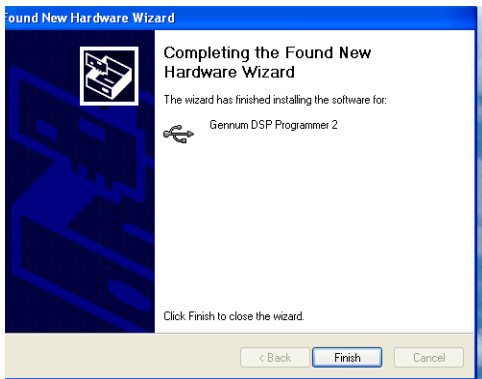
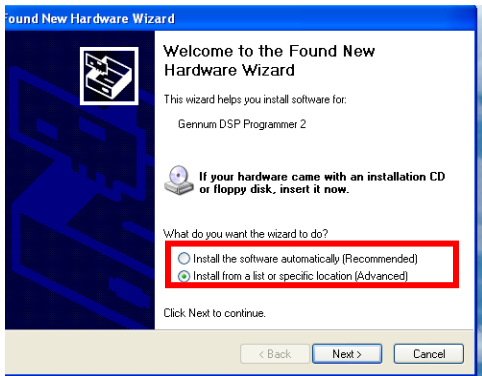


System will show “Found New Hardware”



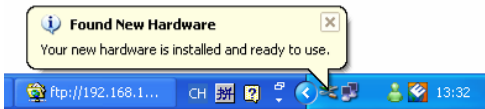
5) Second time installation for Gennum DSP Programmer 2

Select "Install software automatically"



6) After finish, system will show “Found New Hardware”

Now your NSPRO is ready to use.



NOTE: If you do not have an installation CD?

1. Download NSPRO driver from our website

[http://www.lovehearing.com/images/download/file/NS-PRO driver.rar](http://www.lovehearing.com/images/download/file/NS-PRO_driver.rar)

2. Un-zipped the file and set to new folder before installation

3. When the Dialog Box “Hardware Wizard” is shown. Please select “Install from a list of specific location”

4. Select “Include this location in the search”, and direct to the folder that you build for the driver.

System will install the driver automatically from the folder.

Start connecting hearing instrument

- 1) Connect NSPRO with computer by USB cable.
- 2) Connect NSPRO with NS63 cable. Align the Blue colored NS63 cable and the Left side interface on NSPRO. Align the Red colored NS63 cable and the Right side interface on NSPRO.
- 3) Connect hearing instrument with NS63 cable.

Step 1. Load battery before inserting the cable.

Step 2. Open the battery door slightly to create a space on the hinged side of the battery door.

Step 3. Insert flex connector into the space created on the hinged side of the battery door of the hearing instrument. Insert the the blue flex connector into the left hearing instrument and red flex connector into the right hearing instrument. Do not force this connection.



NOTE: The gold shiny side of the flex connector and the arrow side of protection sleeve must be facing away from the battery door.

Step 4. Close the battery door

